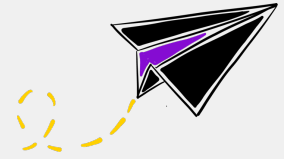


The AI-power for employees and businesses

Employee GPT is an enterprise AI assistant designed to integrate seamlessly into your business.

Think of it as a secure, Swiss-hosted version of ChatGPT, but fully customized to your company's needs. Unlike generic AI tools, Employee GPT adapts to your business, using your data, workflows, and brand voice to support every department.



Why employee GPT?



Secure and GDPR compliant

Access top GenAI models while keeping sensitive data protected. Private options ensure secure handling of confidential tasks, with all data stored safely in Switzerland.



Affordable and Scalable AI

Access high-performance models at a cheaper price. Employee GPT grows with your business, offering flexible solutions that adapt to your needs and deliver ongoing value



Unique AI for your business

AI tailored to your business. Trained on your data, tone, and workflows. We make AI work for you, ensuring it enhances your unique voice and operations.



Free employee trainings

We ensure your team adapt to the latest technologies and uses AI efficiently, with tailored training and seamless integration into your workflows.

Boost productivity across departments

- **HR & Recruitment:** Automate onboarding and FAQ handling.
- **Marketing & Sales:** Generate content, analyze campaigns, and optimize customer outreach.
- **Legal & Compliance:** Review contracts and document analysis.
- **Operations & Finance:** Create reports and customer support tools.
- **And for all the other tasks relevant for your company. We customize it for your tasks and needs.**

Why now?

With new regulations like the [EU AI Act](#) shaping the future of AI governance, businesses must prioritize data security and compliance. Employee GPT helps you stay ahead by offering a secure, intelligent, and fully integrated AI solution that protects your business while boosting efficiency.

